

The Chesapeake

3,062 - 4,350 Sq. Ft.
4-5 Bedrooms
2.5-4.5 Baths

The Chesapeake

3,062 - 4,350 Sq. Ft.
4-5 Bedrooms
2.5-4.5 Baths



A



B



C



D



E

Elevation shown with optional dormer

The Chesapeake is a sophisticated first floor master home that offers a functional flow for easy family living. In the kitchen, the large center island overlooks the breakfast nook and great room for easy service and an optimum entertainment space. A spacious dining room at the front of the home awaits elegant evenings and formal dinner parties. The family entry off the garage is a homeowner's dream with a walk-in closet to store summer and winter clothing, a large mudroom perfect for dropping backpacks and wet mittens, and a private laundry room. The private first floor owner's suite offers a lavish master bath with dual sinks, a soaking tub and separate shower and huge walk-in closet. The second story features a catwalk overlooking the great room, as well as three family bedrooms with an abundance of room and closet space.

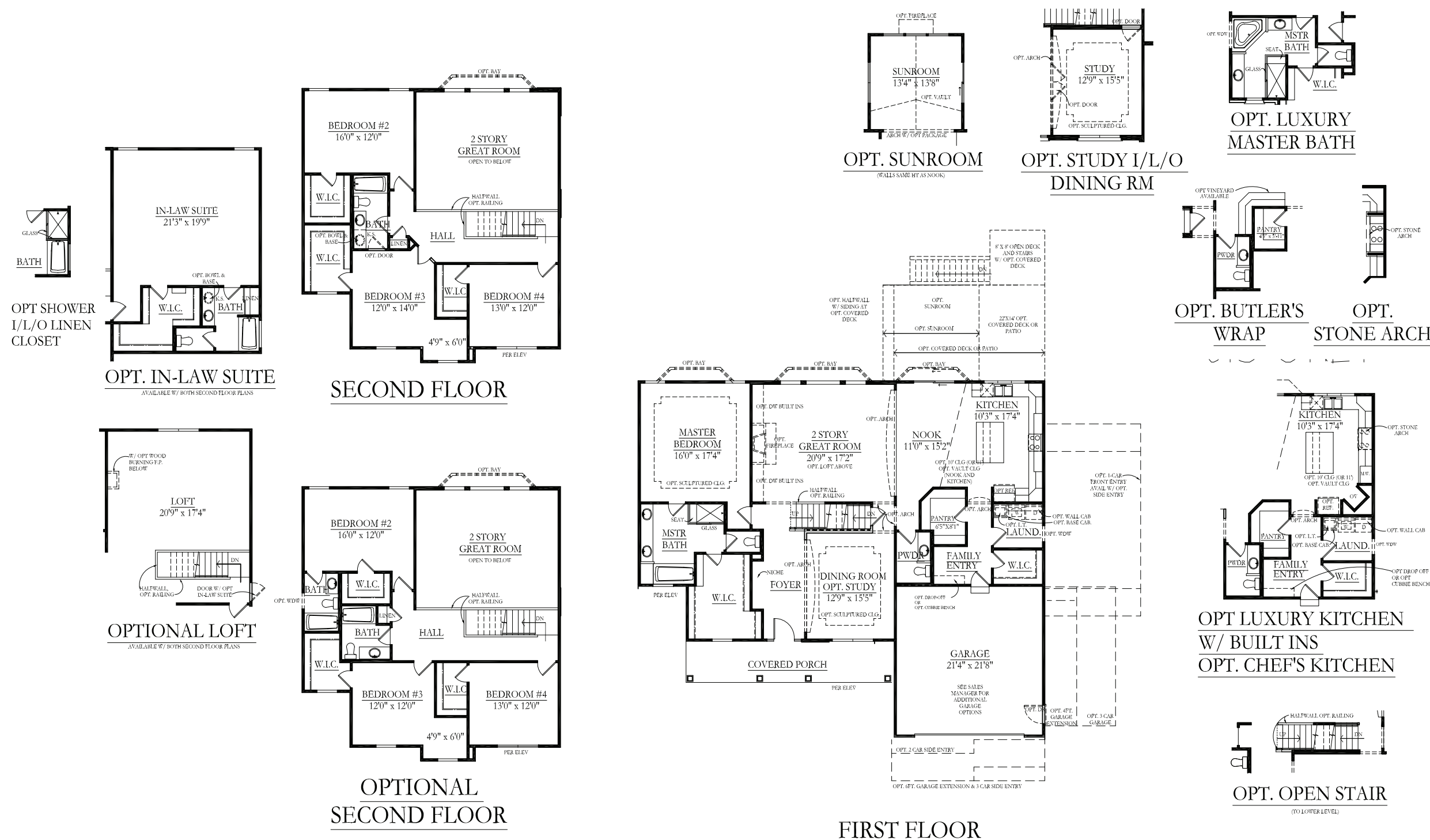


F



The Chesapeake

Traditions Series
4-5 Bedrooms
2.5-4.5 Baths



This depiction represents an artist's conception of the elevation and floor plan and is not intended to be an exact representation or show specific detailing. Plans remain subject to change without notice. Drawings are not to scale. All measurements shown are approximate and not necessarily to scale. Location, size and construction of doors, windows, wall, fireplaces and any other items depicted may vary depending on elevation preference or choice of options and are subject to change without notice. Some options and elevations shown may not be available in every neighborhood; see Sales Manager for details. Due to normal construction tolerances, the room sizes shown may vary slightly. The Builder may change home design, materials, features and methods of construction without prior notice. Model homes may contain some optional features not available through the Builder.



EQUAL HOUSING OPPORTUNITY
Rev. 4/21/15

